



## Home at Papon

**Location:** Santa Cruz

**Lot size:** 696 m2

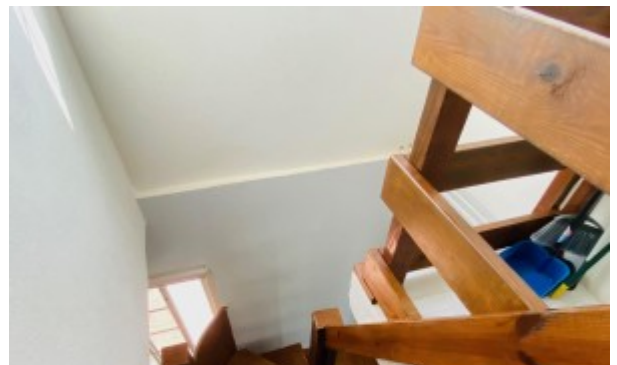
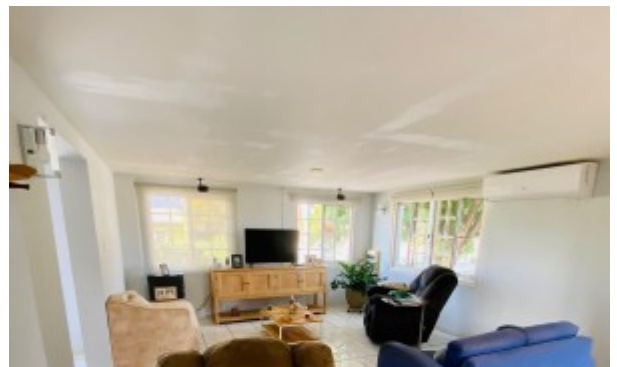
**Price:** 275000 USD

**Built up size:** 220 m2

**Bathrooms:** 2

**Bedrooms:** 2

Sold! Reduced from USD 295.000 to USD 275.000 This two-level corner dwelling is built on a lot of 696 m2 land. The property is located on a public paved road in Papon, a quiet area in Santa Cruz. You will find supermarkets, sport parks and local restaurants nearby. The living and dining areas and the open kitchen are located on the ground floor and the 2 master bedrooms are located on the first floor. A 360 degrees balcony around the first floor allows you to enjoy the great view from every angle! The home is surrounded by a huge garden with great space for a pool or gazebo. There is also a garage with remote electrical door. The lot size is 696 m2. The built up size is 220 m2. Contact Gwen Wever for a viewing or more information. Email: [gwen@bhhsaruba.com](mailto:gwen@bhhsaruba.com) Mobile: +(297) 593 7366



[Read more on our website](#)

**Berkshire Hathaway HomeServices Aruba Realty**

Website: [bhhsaruba.com](http://bhhsaruba.com) | Office number: +(297) 280-0047 | Email: [info@bhhsaruba.com](mailto:info@bhhsaruba.com)

Copyright © 2026 Berkshire Hathaway HomeServices Aruba Realty, LLC

An independently owned and operated franchisee of BHH Affiliates, LLC.